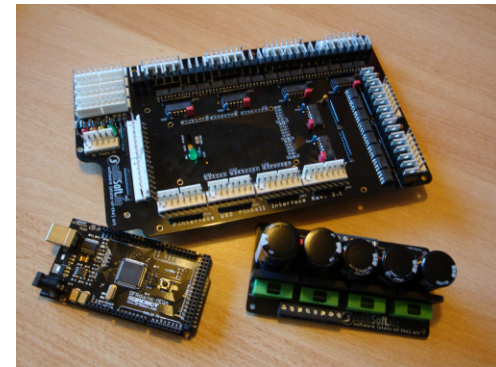


"PINterface" - USB pinball interface for custom pinball machines

The "milliSoft PINterface" is a system to design your own custom pinball machine with individual game rules, audio and video output. It includes a software package and hardware components to use pinball machine solenoids, lamps and contacts for input detection and interfacing outputs. The game rules can be configured by text based XML configuration files and a graphical editor software. Based on this toolkit everyone who is interested in building a custom pinball game can succeed.



Some knowledge about repairing existing pinball machines is enough to build a custom game. For more information please visit our Wiki at "http://www.milliSoft.de/pinterface/wiki_en"

Features

freely configurable

Create your own pinball machine including individual game rules, graphical output (images, videos), music and sound effects

no additional pinball electronics required

Our electronics replaces all functions of common pinball electronics. There is an I/O board for input handling and output driving and a rectifier board for power supply.

for unique machines or small production series

**Sound and video playback including game logic and rules are done using a PC
Design your own favorite theme for a worldwide unique pinball machine or use our electronics to realize a small production run for commercial use.**

Technical data

scope of delivery: PINterface kit including the interface board and rectifier board (both as pcb including the required components, soldering required), microcontroller board (assembled), PC software for hardware tests, graphical rule set configuration and pinball operating system

PC: Microsoft Windows 2000, XP, Vista 32bit, Windows 7 32bit with USB 2.0 port

functions:

-48 direct inputs for switches (for flipper buttons, targets,..) without switch matrix

-48 outputs for solenoids and lamps (e.g. flippers, insert lamps)

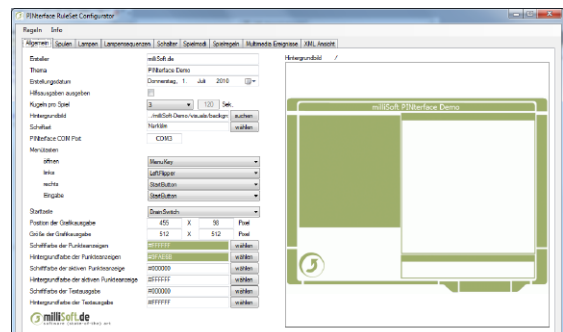
-graphical output of images and video sequences (e.g. AVI-DivX) using a TFT screen

-output of sound effects and background music (e.g. MP3) using the PC

-full individual game control based on your own rules (as XML file) including a graphical editor



pinball operating system demo



graphical rule set editor

Contact

milliSoft Softwareentwicklung Saar GbR, Holger Hewener, Christian Günther and Daniel Speicher
Gewerbe- und Technologiezentrum (GTZ), Rathausstraße 75-79, 66333 Völklingen, Germany

mobile: +49 176 666 09 023
internet: <http://www.milliSoft.de>

fax: +49 321 210 92 538
eMail: info@millisoft.de